

The Only Tires Worthy of Our Name

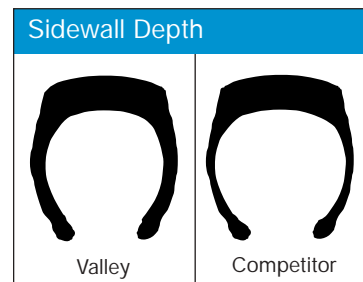
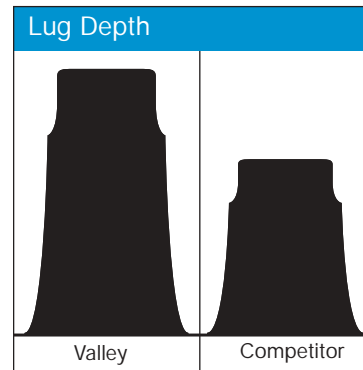
Any way you measure them, Valley® Irrigation Tires beat the competition's irrigation specials. New or retread, they're everything you'd expect in tires designed and provided by the world's irrigation leader.

NEW TIRES

Features	Benefits
• Larger size	• Full-size tractor tire - thicker, longer lugs than the competition's "irrigation specials" - delivers longer-lasting performance
• Lug quantity	• More lugs per tire (36 vs. 32 on 11.2 x 24" tire) provide better traction
• Lug depth	• Greater bar height (1.375" vs. .875" on 11.2 x 24" tire) increases traction and durability
• Lug length	• Longer lugs (7.5" vs. 7.0" on 11.2 x 24" tire) for better traction
• Durable sidewall	• Thicker 4 & 6-ply construction lasts longer and resists punctures
• Special rims for high-stress applications	• Special reinforcement on 11.2 x 38" rims for extra strength

RETREAD TIRES

Features	Benefits
• Steel valve stem	• Stronger than competitors' rubber valve stems, lasts longer
• Radial tire	• 30% larger footprint than competitors' bias ply means more even weight distribution and less damage to fields and crops
• Thicker sidewall	• 12 & 14-ply construction lasts longer and resists punctures
• Mounts tubeless	• Eliminates tube chafing, a leading cause of flats
• Hot mold application	• More rubber applied for longer life
• Deeper lugs	• Provide better traction and longer wear
• Full 2-year warranty	• Peace of mind protection against wear and puncture



The Valley Drive Train is unmatched in performance and design. We work hard to deliver the best quality products in the industry to you. Our new U-joints continue this tradition, including the Ultra Heavy Duty U-joint with a 3/8" steel rod for the most demanding application. Also, the standard Valmont U-joint now includes a urethane puck for extended life.



P.O. Box 358
Valley, Nebraska 68064-0358 USA
Phone: 402-359-2201 (Ext. 3415)
Fax: 402-359-4429
E-mail: irrigation@valmont.com
International Fax: 402-359-4948
E-mail: vintl@valmont.com
www.valmont.com

See your local authorized Valley Dealer:

Valmont- Irrigation has a policy of continuous product improvement and development. As a result, certain changes in standard equipment, options, price, etc., may have occurred after the publication of this catalog. Some photographs and specifications may not be identical to current production. Your local Valley-Dealer is your best source for up-to-date information. Valmont Irrigation reserves the right to change product design and specification at any time without incurring obligations.
©2003 Valmont Industries, Inc., Valley, NE 68064 USA. All rights reserved. AD10695 SS/JN 7/03

Setting the Pace



Built to Last



Land characteristics change as farming and irrigation expand. Slopes are more severe, tires get bigger, conditions become more challenging.

At Valley®, we make design changes to stay ahead of trends...and always provide the best products.

That's why the Valley Gearbox is designed and built to work better, work harder. With a stronger, heavier bull gear...pre-loaded worm gear...and our input and output shaft seal that keeps oil in, keeps problems out.

Exclusive input seal — 7-barrier construction keeps dirt and moisture out and oil in for longer life. Best performance in the industry.

Input bearings — large input bearing for long life

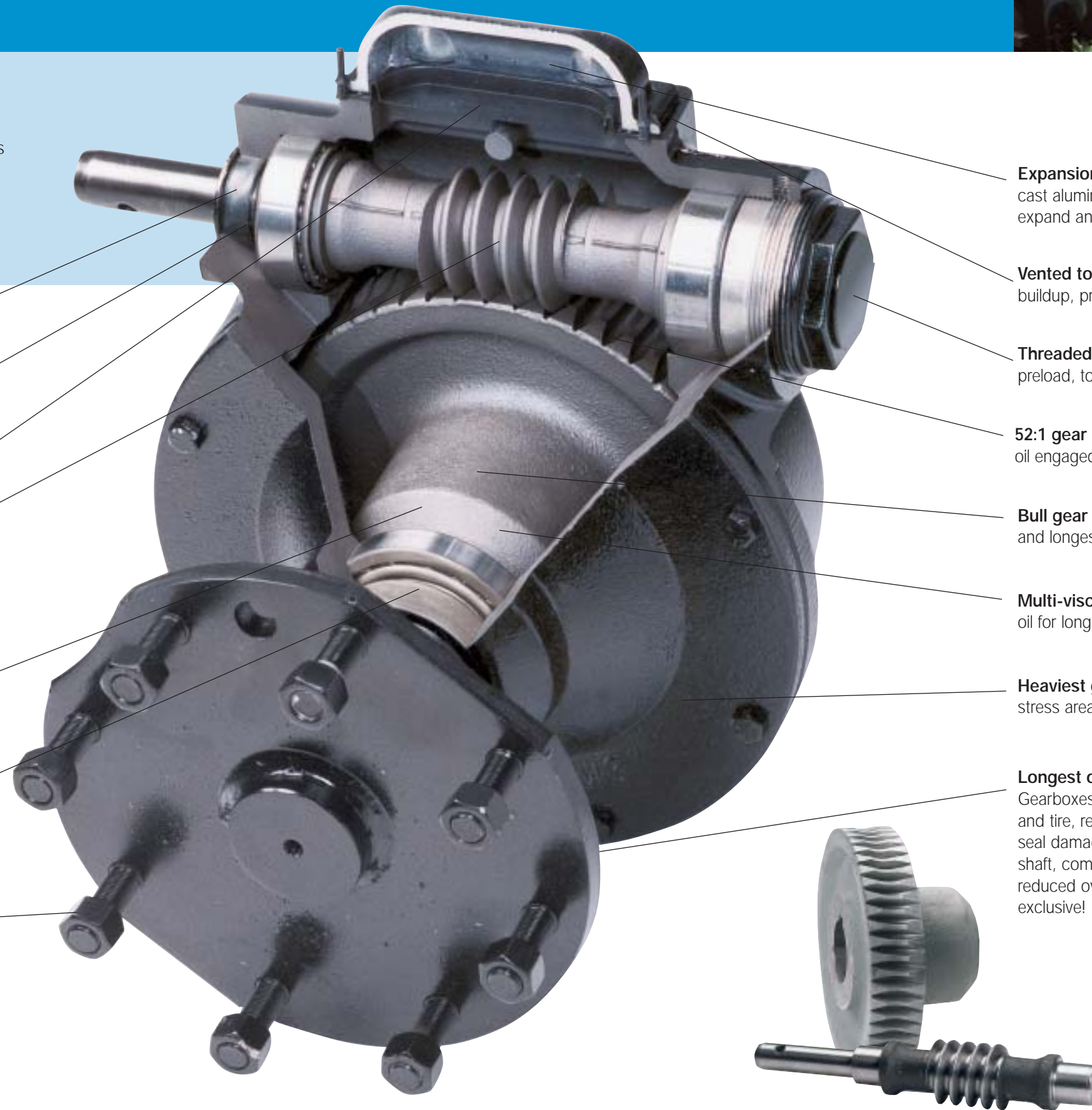
Largest capacity rubber diaphragm — expands with heat and pressure to minimize water condensation.

Worm gear — 25° tooth angle gives higher torque loads and load capabilities. Provides 40% longer life and better reliability in tough conditions.

Largest throat and keyway — for strength in critical load-bearing area.

Exclusive output seal — 7-barrier construction keeps dirt and moisture out and oil in for longer life. Best performance in the industry.

Exclusive! Grade 8 bolts — used in critical areas, higher strength than normal Grade 5.



Expansion chamber — cap made of noncorrosive cast aluminum; rubber diaphragm allows oil to expand and contract during operation.

Vented to the environment — prevents pressure buildup, prevents seals from leaking.

Threaded endcap — allows accurate bearing preload, to increase bearing life.

52:1 gear ratio — full recessed tooth design keeps oil engaged between gears.

Bull gear — highest load capacity in the industry and longest life. Longer keyway and thicker hub.

Multi-viscosity gearbox oil — exceeds 85w140 GL5 oil for long gear wear under extreme load conditions.

Heaviest gearbox housing — more material in high stress areas. Designed to distribute loads more evenly.

Longest output shaft (steel) — exclusive with Valley Gearboxes! Provides extra clearance between gearbox and tire, reducing mud buildup, which in turn prevents seal damage and extends the life of the gearbox. The shaft, combined with the special offset rim, provides a reduced overhang load . . . another Valley Gearbox exclusive!

Improved Performance

New V-3 Drive



In challenging soil conditions, the new V-3 drive unit will add the extra traction required to move through the field. It provides 50% more flotation than a standard drive unit to help get through rough spots and reduce rutting.

Features	Benefits
<ul style="list-style-type: none"> Lowest ground pressure available 	<ul style="list-style-type: none"> Minimize ruts
<ul style="list-style-type: none"> Accepts any current tire size 	<ul style="list-style-type: none"> No 'special' tires to purchase. Use existing supply.
<ul style="list-style-type: none"> Special heavy-duty center gearbox 	<ul style="list-style-type: none"> Durability and reliability
<ul style="list-style-type: none"> Heavy-duty basebeam 	<ul style="list-style-type: none"> Supports drive unit even on ridges and rocks

Gearbox Input and Output Seals

Features	Benefits
<ul style="list-style-type: none"> Exclusive Valley design 	<ul style="list-style-type: none"> Improves performance Retrofits to existing Gearboxes
<ul style="list-style-type: none"> 7-barrier construction 	<ul style="list-style-type: none"> Increases bearing life Reduces down time Increases profits
<ul style="list-style-type: none"> Proven performance 	<ul style="list-style-type: none"> Extends seal life; four times the life of competitive seals in independent laboratory tests Reduces maintenance cost
<ul style="list-style-type: none"> Seal turns with shaft 	<ul style="list-style-type: none"> Reduces shaft wear, forms positive seal against the shaft for longer life
<ul style="list-style-type: none"> Inner oil seal 	<ul style="list-style-type: none"> Extends gearbox life thanks to spring-loaded lip that keeps oil in



These are the seals designed for Valley Gearbox applications to help assure long life for gearbox components. A Valley exclusive... these seals are standard on all new Valley equipment... or you can retrofit any existing Valley Gearbox.

Towable Gearboxes

Increase the versatility of your Valley® investment—maximize use by towing one machine between fields.

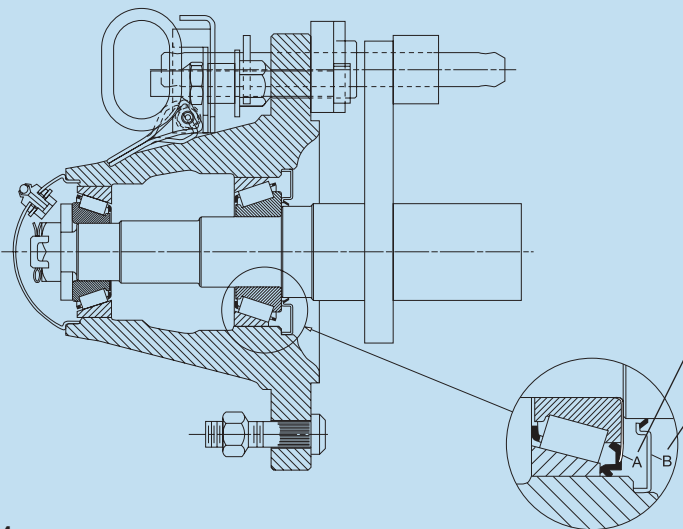
It takes only a few minutes to switch to the towable configuration. Simply remove the drive torque pin and rotate the gearbox 90 degrees. The wheel will now rotate freely on the drive axle. When all of the gearboxes have been rotated, your equipment is ready to be towed to the next field to start irrigating another crop. A machine can typically be ready to tow in less than an hour.

Valley® Towable Hubs

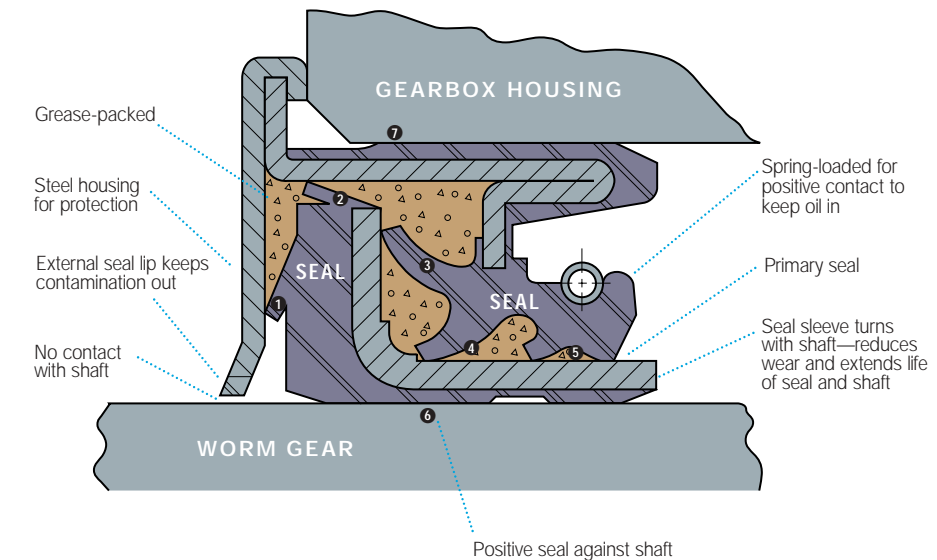
Inner bearing seal (A) resists the grease flow, causing a slight pressure to exist inside the housing.

Any contaminant getting past the outer seal (B) is contained between the two seals and then flushed out during the next grease application.

Uncontaminated grease always fills both tapered roller bearings.



Features	Benefits
<ul style="list-style-type: none"> Greasable hub and bearings 	<ul style="list-style-type: none"> Reduced wear of hub and output shaft for long life
<ul style="list-style-type: none"> Towable hub seal 	<ul style="list-style-type: none"> Keeps water and dirt out for reduced downtime and increased seal life
<ul style="list-style-type: none"> Inner bearing seal... a Valley® exclusive 	<ul style="list-style-type: none"> Provides secondary protection against water and dirt for increased bearing life
<ul style="list-style-type: none"> Large tapered roller bearings 	<ul style="list-style-type: none"> Handles greater loads and provides for longer life
<ul style="list-style-type: none"> Quick-release torque pin 	<ul style="list-style-type: none"> Allows for easy switching between tow and non-tow positions
<ul style="list-style-type: none"> Grease zerk fitting 	<ul style="list-style-type: none"> Ensures housing remains completely filled with grease for long life of both bearings
<ul style="list-style-type: none"> Direct replacement gearbox 	<ul style="list-style-type: none"> Fits competitive machines for upgraded performance and longer life



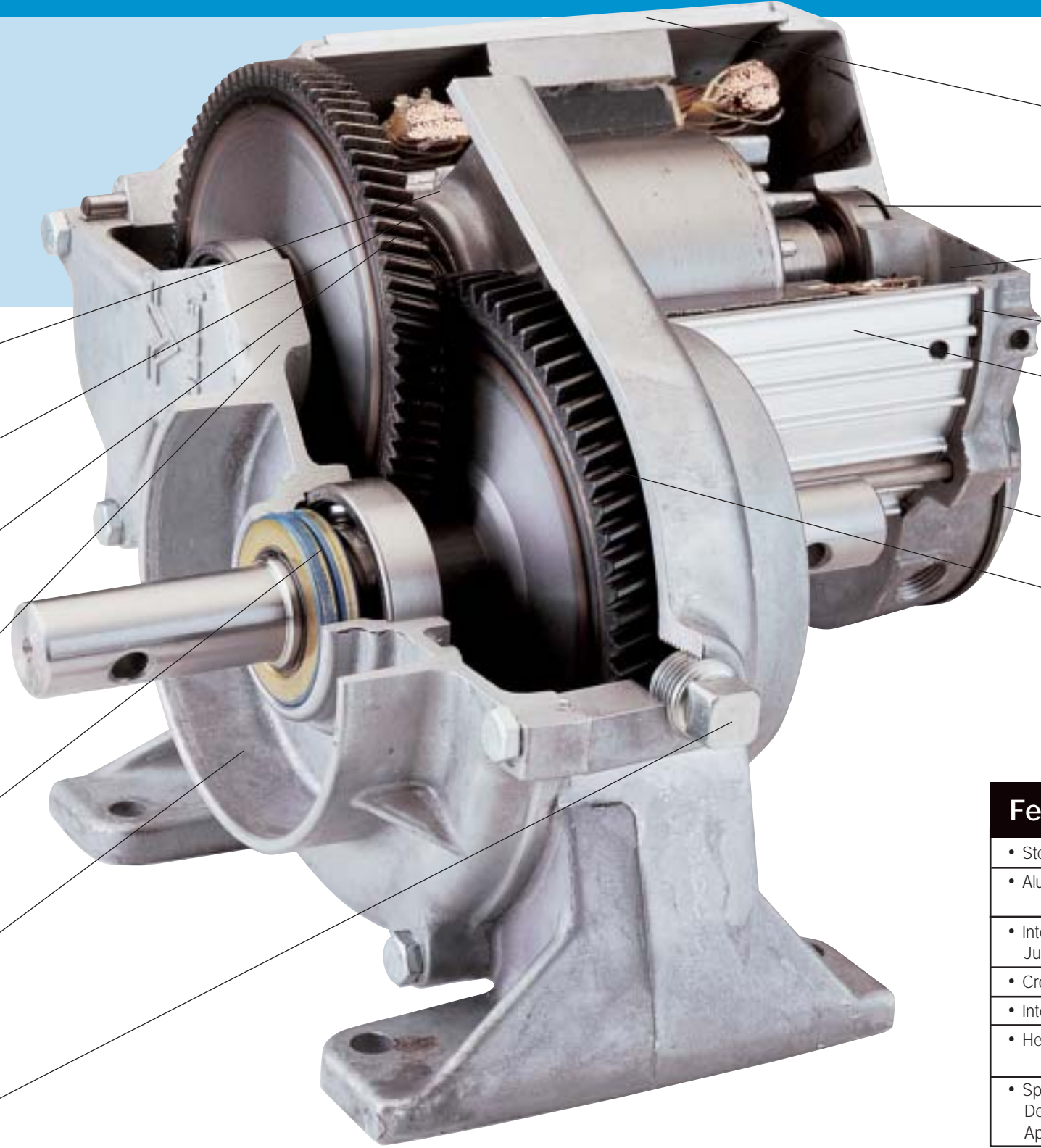
Seven barriers keep dirt out & protect against contamination of oil and wrapping of plants, vines, etc., before they can penetrate to the primary seal.

Industry Leading Center Drive



At Valley, we believe in the relationship you have with the land. We're dedicated to helping you produce more crops with less water; dedicated to helping you protect the land and our precious water resources.

Discover the superior performance and energy savings that come from our advanced engineering.



Large 1 3/16" motor shaft

Pinion gear — integral with motor shaft

25° tooth angle — provides 40% greater load capacity and wear resistance than other manufacturers' 14° tooth angles

Extra-large intermediate gear bearings — assure longer life

Double output shaft seals

Built-in crop guard over U-joint — prevents crop wrapping in or near oil seals

Drain plug — easily accessible, extra large

Stator — can be replaced independent of rotor, and is held in place with corrosion-resistant, stainless steel bolts for easy maintenance

Extra-large motor bearing

Exclusive coating — applied to internal surfaces to prevent corrosion

Watertight seal — between housing components

Finned aluminum housing — for cool-running efficiency. Operates at temperatures 20° F (11° C) lower than comparable motors with steel housing, because the Valley aluminum housing and fins dissipate heat more effectively. This doubles insulation life and increases motor life.

Exclusive junction box seal and internal vent — keeps motor lead connections dry

Case-hardened steel helical gears — More teeth in mesh at all times for smoother power transmission. Gears require fewer reductions, fewer gears, fewer shafts and bearings. Fewer reductions also mean greater operating efficiency.

Features	Benefits
• Steel Gears	• Provides more strength than powdered metal
• Aluminum Finned Housing	• Runs 20° cooler for a longer motor life • No paint to chip, scratch and corrode
• Internally Vented Junction Box	• Prevents moisture and contaminants from corroding the wire connections
• Crop Guard	• Protects shaft seals to extend its life
• Integral Pinion Gear	• Eliminates coupler, improves reliability
• Helical Gears	• More tooth contact than spur gears, providing more torque capacity and quieter operation
• Special Motor Windings Designed for High-Torque Applications	• 40% higher operating torque than the competition